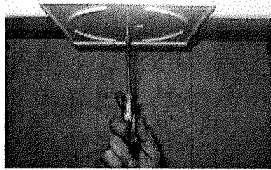
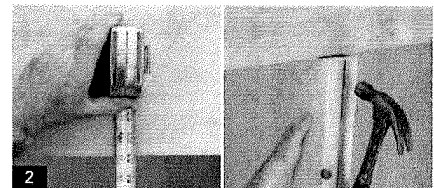


1


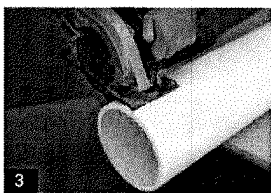
NOTE: If using ER Cap Flashing Kit it is important to center and fasten the flashing to soffit using #10 wood screw (provided) prior to beginning step one. The screw should be used as the center point of soffit to drop plumb bob.



1. Drop a plumb bob from the center of the soffit to determine the column's center point on the floor. Mark this point for reference to align the shaft in the proper position.



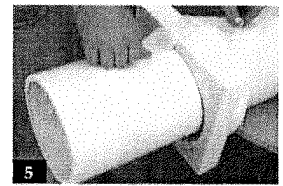
2. Measure the overall opening height. Raise the soffit slightly with a sturdy brace to allow positioning of the column during installation.



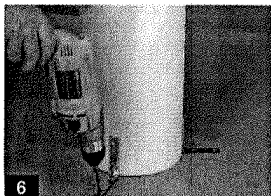
3. Trim the shaft from the bottom with a circular saw equipped with an abrasive cut-off blade. Make final adjustments with a belt sander or rasp. It is very important that the load be evenly distributed around the entire circumference.



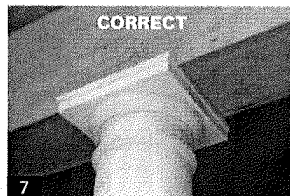
4. Slide the capital over the top of the column shaft allowing it to gently rest on the astragal.



5. Slide the base onto the column shaft from the bottom. It may be necessary to hold the base in position with tape.



6. With the shaft in place, use self-tapping masonry screws to secure L-brackets to floor surface. Pre-drill the shaft to receive screws.

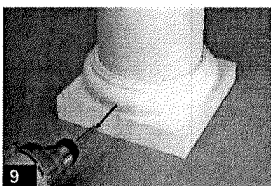


7. Remove any bracing and allow the load to bear on the column shaft. Make sure the load is centered over the entire circumference of the column shaft. When in proper position:
(a) The top and bottom of the column shaft will fit evenly with the adjoining surface. There will not be any voids or distortions between the shaft and the adjoining surface.
(b) The load will rest evenly around the entire circumference of the column shaft. **NOTE: Do not finish the installation unless both (a) and (b) are achieved.**

8. Slide the capital into place, pre-drill through the capital, and secure the capital to the soffit above using rust resistant screws. Use automotive body filler to cover the screw heads

STORAGE

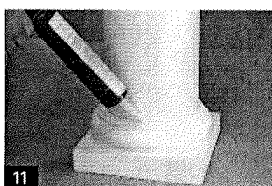
✓ Fiberglass columns must be stored in an area that is cool, dry and out of direct sunlight.



9. Pre-drill and attach the base to the column using rust resistant screws. Use automotive body filler to cover the screw heads.




10. Apply a paintable silicone caulking between the capital and the shaft. (Note: **Not all silicone caulking is paintable.**)



11. Apply a paintable silicone caulking between the base and the shaft. (Note: **Not all silicone caulking is paintable.**)

SPECIAL NOTE

If building codes specify uplift protection, additional hardware is required.  recommends Simpson Strong-Tie anchor tie down hardware. Simpson Strong-Tie's toll free number is 800-999-5099. Follow the manufacturer's instructions when installing the hardware.

FINISHING INSTRUCTIONS

- To prevent damage from ultraviolet rays, use quality, exterior grade acrylic latex coatings. **NOTE:** Acrylic latex products have superior adhesion over plain latex finishes. Coat the entire column shaft, capital, and base. A minimum of one (1) primer coat and one (1) finish coat should be applied prior to installation.
- Do not paint using dark colors (dark colors are considered any color that falls within the L values of 56 to 0). L is a measure of the lightness of an object, and ranges from 0 (black) to 100 (white).
- Paints, while usually dry to the touch in hours, may take several days to thoroughly cure. The column should be protected from contact during this curing process.
- Always follow the paint manufacturer's instructions.