

Fireplace Surround Installation Instructions

Materials needed:

Dry wall screws

Construction adhesive (optional)

Pencil

Tape measure

Tools

Brackets (included)

Level

Screw gun

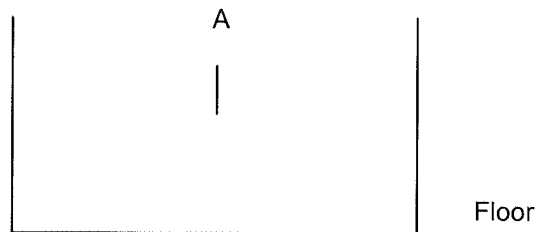
These instructions are in two parts:

- Part I covers the layout process.
- Part II covers the installation of your fireplace surround.

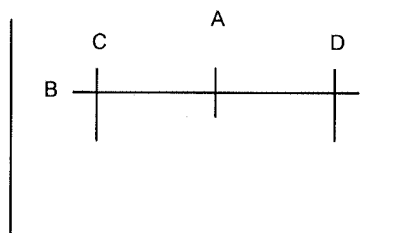
Note: These instructions assume your fireplace walls and your hearth are level.

Part 1:

- I. Place your fire surround on the floor as it would be installed on the wall.
 - a. Locate the centerline of the mantel. Transfer this line to your wall, this is line A.



- b. Draw a horizontal line at the mantels height, this is line B.

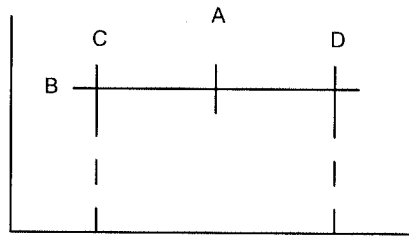


- c. Find the center dimension of the legs on your fire surround and mark them on line B. Mark these two points C and D.

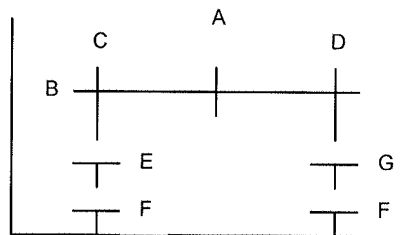


24 River Road • Bogota, NJ 07603

- d. Drop plumb vertical lines through these points to the floor for each leg.



- e. Measure the height of the bottom legs crossmembers and subtract $\frac{1}{2}$ from that measurement. Transfer these measurements to your leg centerlines and call them E, F, G, and H.



Part 2:

II. Bracket Placement

- Attach brackets centered and aligned with your leg horizontal lines. Only use two screws in each of the brackets. This will allow for minor adjustment up or down of the brackets.
- Trial fit the legs by sliding them down on to the brackets.
- Now place the mantel on the two legs and check for alignment. Check that the legs are plumb and that the mantel is level. Draw reference lines on your wall.
- If all is well, draw a line along the bottom of the mantel as a reference for the mantel attachment brackets.
- Remove the mantel and then the legs. Secure the brackets with the remaining screw holes including the set screw.
- Apply any construction adhesive to the bottom or rear edges and reinstall the legs on your lines. Check for plumb.
- For the mantel, measure from the outside, finished, bottom edge to the bottom edge of the attachment bar.
- Using the line drawn in step II4 measure up and draw a horizontal line again the distance found in II7.



- i. Install brackets as before.
- j. Trial fit mantel check for alignment and levelness.
- k. Remove mantel, complete adjustments, and secure brackets including set screw.
- l. Apply construction adhesive to install unit permanently.

